

# Product Summary Sheet

## Applications:

- ▶ DC/DC or AC/DC LED driver applications
- ▶ LED backlight driver for LCD displays
- ▶ General purpose constant current source
- ▶ LED signage and displays
- ▶ Architectural and decorative LED lighting
- ▶ LED street lighting



8-Lead SOIC (LG)

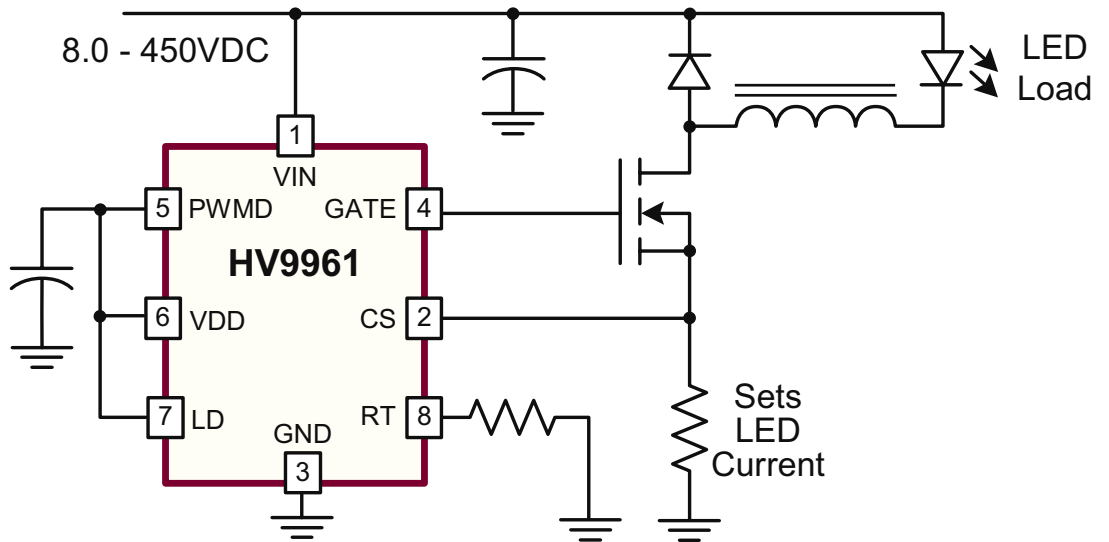


16-Lead SOIC (NG)



070809

## HV9961 LED Driver with Average-Mode Constant Current Control



Typical Application Circuit

## Product Overview:

The HV9961 is an average current mode control LED driver IC operating in a constant off-time mode. Unlike HV9910B, this control IC does not produce a peak-to-average error, and therefore greatly improves accuracy, line and load regulation of the LED current without any need for loop compensation or high-side current sensing. The output LED current accuracy is  $\pm 3\%$ .

The IC is equipped with a current limit comparator for hiccup-mode output short circuit protection.

The HV9961 can be powered from an 8.0 - 450V supply. A PWM dimming input is provided that accepts an external control TTL compatible signal. The output current can be programmed by an internal 272mV reference, or controlled externally through a 0 - 1.5V dimming input.

HV9961 is pin-to-pin compatible with HV9910B and it can be used as a drop-in replacement for many applications to improve the LED current accuracy and regulation.

Features:	Benefits:
Average-mode, constant current control	Improved accuracy without need for loop compensation and high-side current sensing
Built-in PWM/linear dimming	Simple controls to adjust LED brightness
Built in HV regulator $V_{IN} = 450V$	Works directly from high voltage input, save components
Pin-compatible with Supertex HV9910B	Minimum design effort, short development cycle

**Supertex inc.**

# HV9961

## LED Driver with Average-Mode Constant Current Control

### Ordering Information / Availability

Part Number	Package Option	Samples	Lead Time
HV9961LG-G	8-Lead SOIC (Green)	Now	4-6 Weeks ARO
HV9961NG-G	16-Lead SOIC (Green)	3 Weeks	

-G indicates the part is RoHS compliant (Green).



### Product Contact

For any questions regarding the HV9961, please contact your local area Supertex sales office, or contact the main office in the US at:

Telephone: 800-222-8888  
Fax: 408-222-4895  
EMail: [mktg@supertex.com](mailto:mktg@supertex.com)  
Website: [www.supertex.com](http://www.supertex.com)

***Supertex inc.***  
1235 Bordeaux Drive, Sunnyvale, CA 94089